



PALISADES III

1501 NOWELL ROAD, RALEIGH, NC 27607

6-STORY, 167,307 RSF
CLASS A OFFICE BUILDING

- Spacious common amenities including cafe, on-site conferencing, lounge, fitness center, and top floor terrace
- Surface and structured parking combined to park 4 per 1,000 SF

HEALTH AND WELLNESS FEATURES

- Bipolar ionization HVAC filtration
- Touchless building entry doors
- Touchless restroom fixtures



CONNECTIVITY ISN'T NICE TO HAVE, IT'S A REQUIREMENT

That's why Palisades III has worked with WiredScore to measure, improve and certify its digital connectivity and has achieved WiredScore Platinum Certification. This means tenants will have the power to achieve success through:

- Secure connections
- Reliable telecommunication sources
- Capacity for growth

VTS Rise provides a premium experience to tenants, including seamless and secured access to the building, campus amenities, and local events.

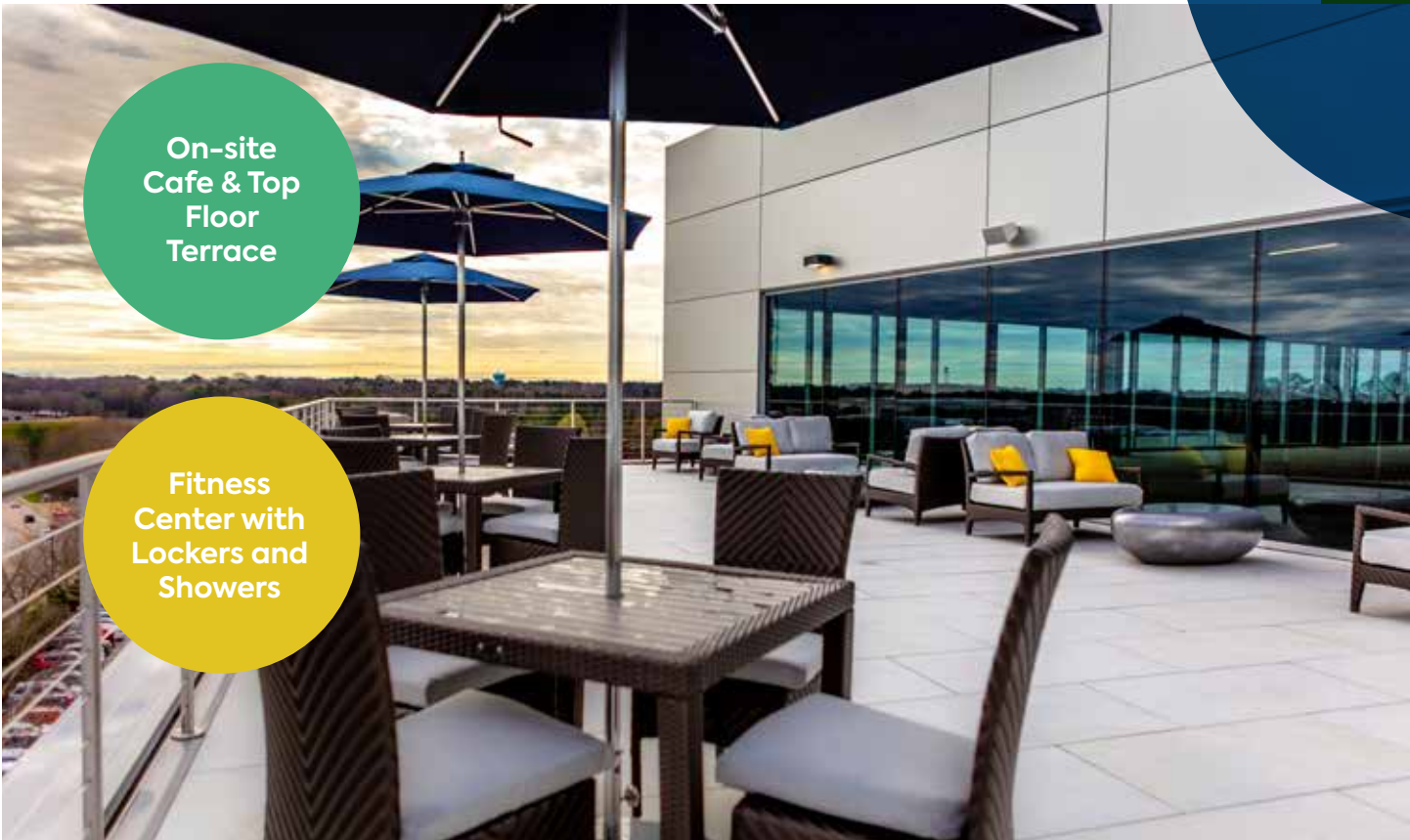


WiredScore
PLATINUM



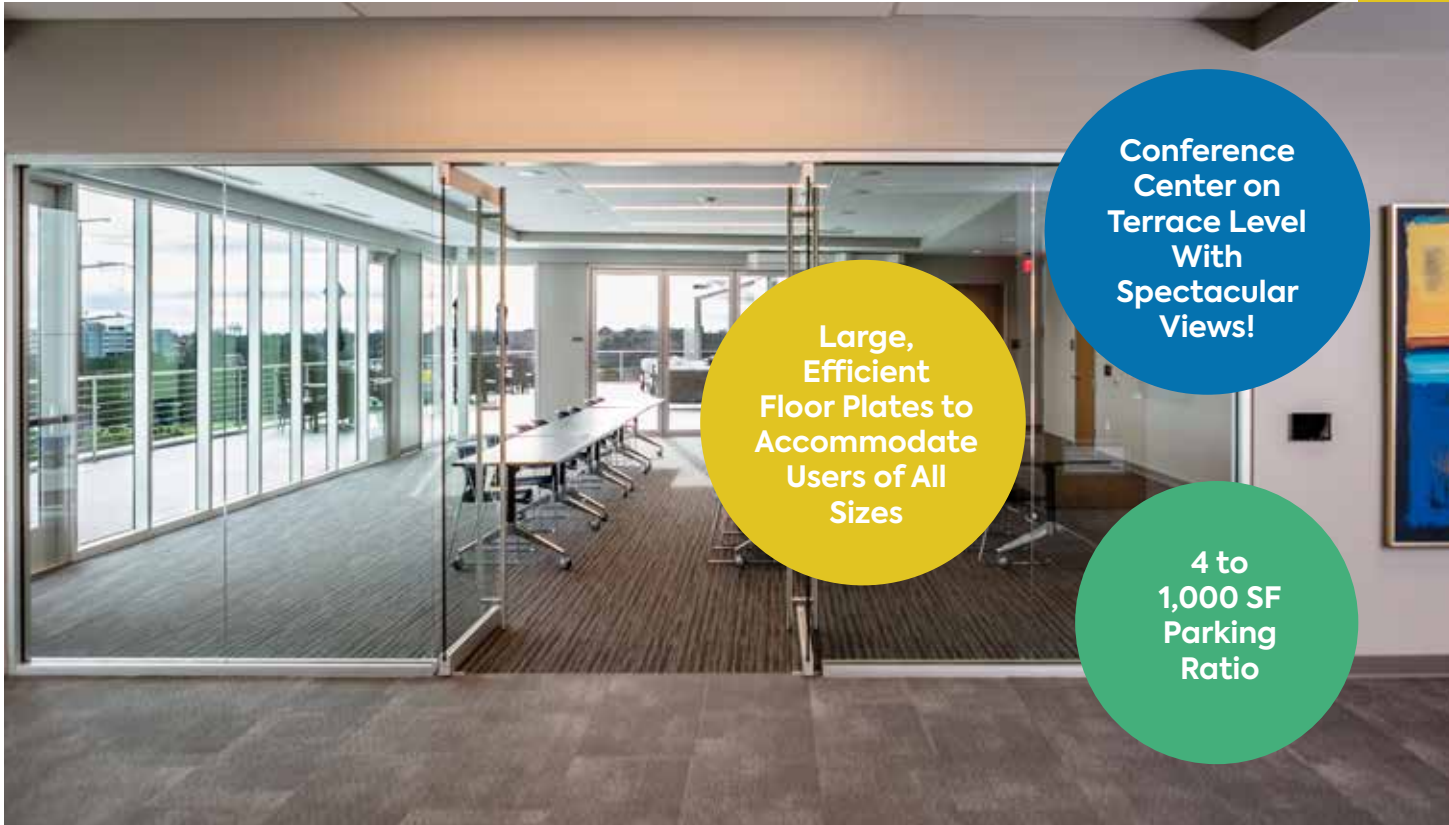
Rise





**On-site
Cafe & Top
Floor
Terrace**

**Fitness
Center with
Lockers and
Showers**

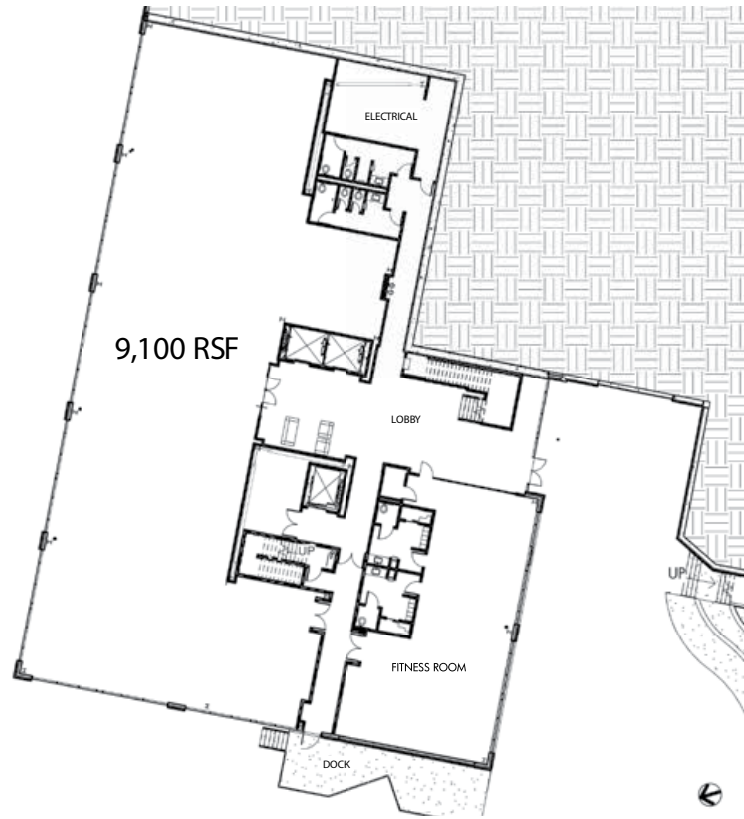


**Conference
Center on
Terrace Level
With
Spectacular
Views!**

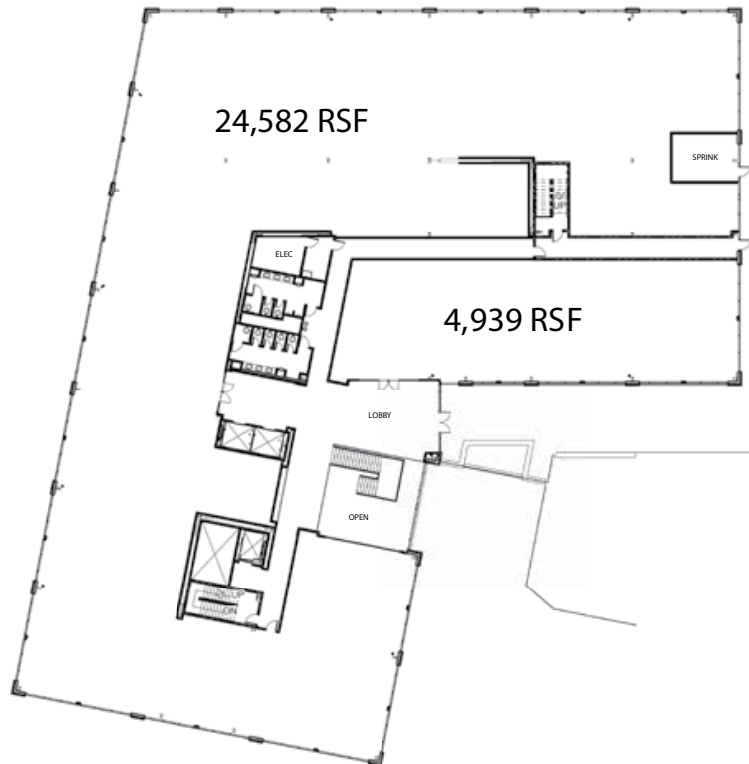
**Large,
Efficient
Floor Plates to
Accommodate
Users of All
Sizes**

**4 to
1,000 SF
Parking
Ratio**

FIRST FLOOR
9,100 RSF



SECOND FLOOR
24,582 RSF
4,939 RSF



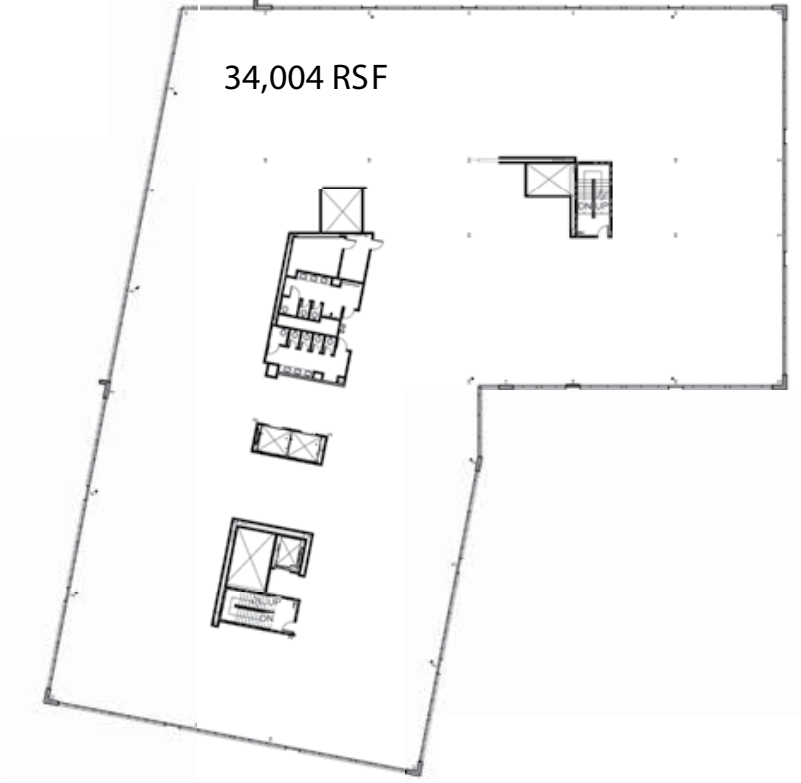
THIRD FLOOR
34,046 RSF



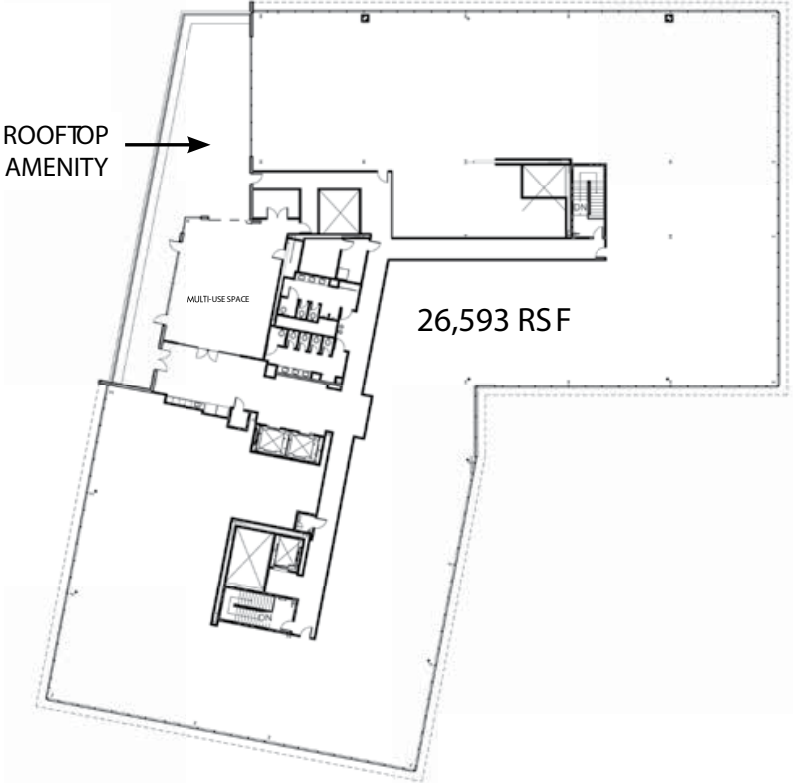
FOURTH FLOOR
34,046 RSF

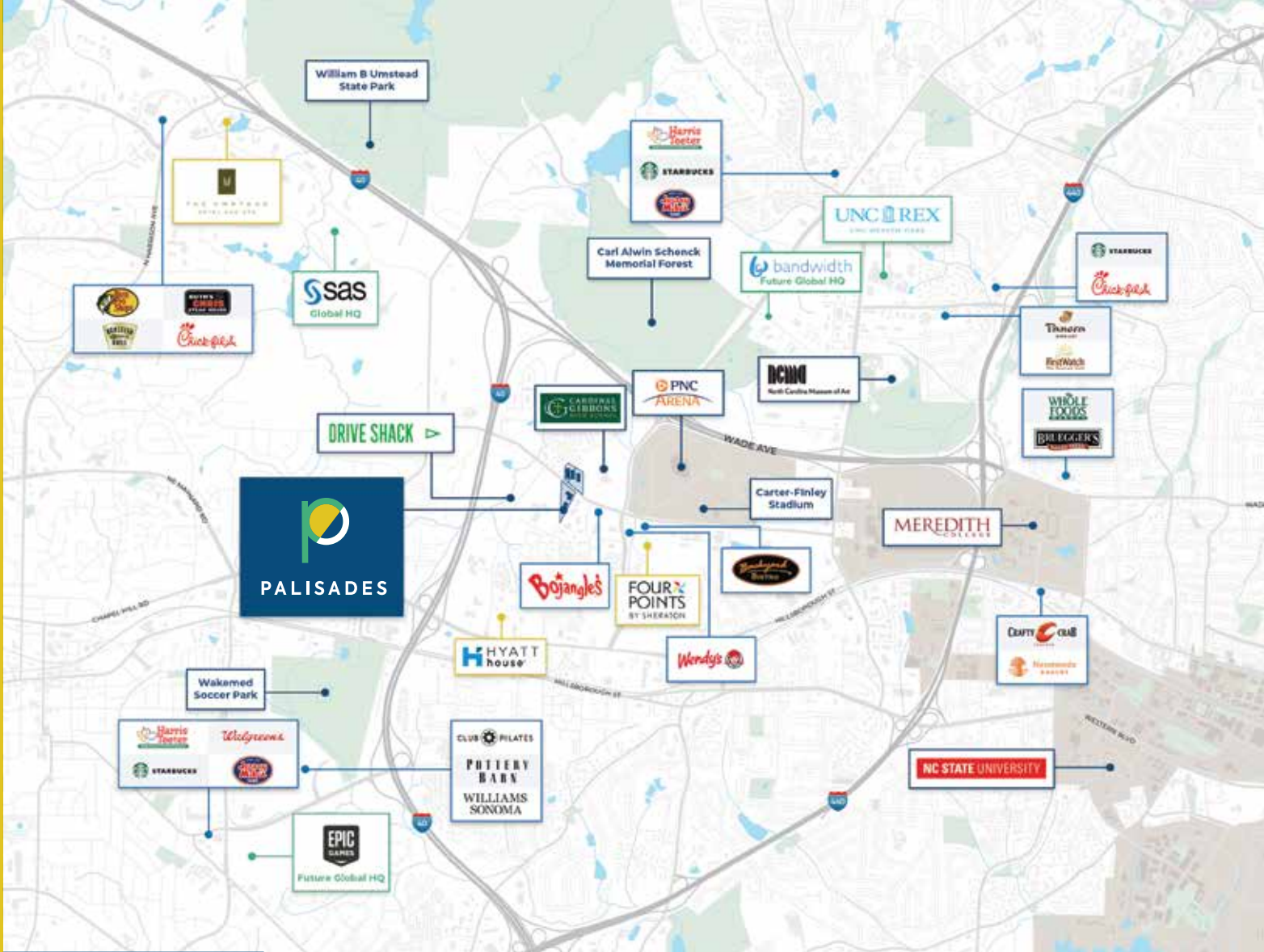


FIFTH FLOOR
34,004 RSF



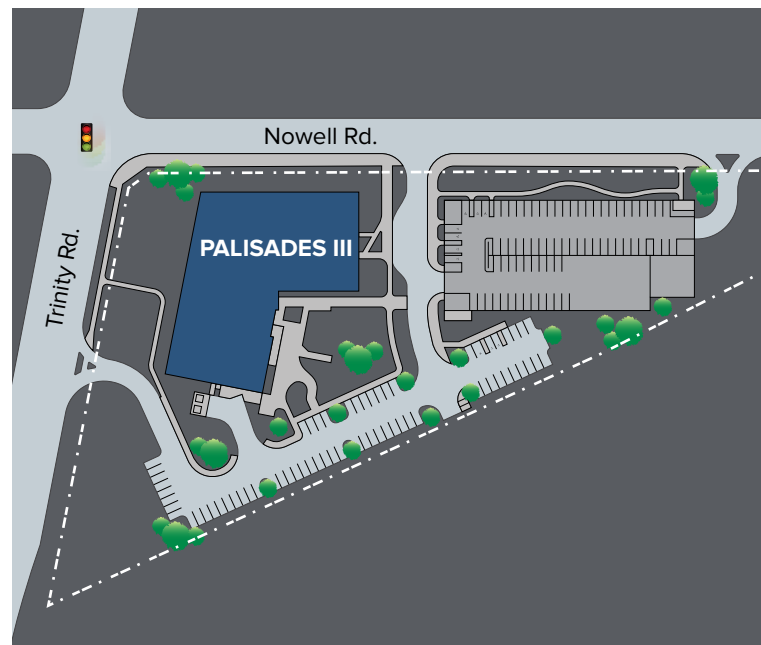
SIXTH FLOOR
26,593 RSF





DRIVE TIMES

- NC State University** - 8 minutes
- RDU Airport** - 11 Minutes
- Downtown Raleigh** - 14 Minutes
- RTP** - 16 Minutes
- Downtown Durham/Duke** - 23 Minutes
- Chapel Hill/UNC** - 30 Minutes





PALISADES

CBRE | Raleigh

For additional information or to schedule a tour:

JOHN BREWER

Executive Vice President

919 831 8214

john.brewer@cbre-raleigh.com

LEE CLYBURN, SIOR

Executive Vice President

919 831 8266

lee.clyburn@cbre-raleigh.com

HASTINGS JONES

Assistant Vice President

919 831 8219

hastings.jones@cbre-raleigh.com



Alidade[®]
Capital

Owned by Alidade Capital
www.alidadecapital.com